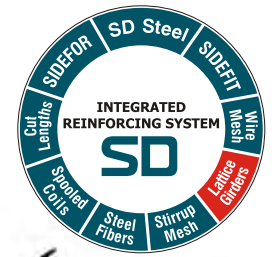


SD INTEGRATED CONCRETE REINFORCING SYSTEM

SD STEEL - SD CUT LENGTHS - COILS - SIDEFIT - SD STIRRUP MESH - SD WIRE MESH - SIDEFOR - STEEL FIBERS - LATTICE GIRDERS



TECHNICAL SPECIFICATIONS

TYPE:

Lattice girders

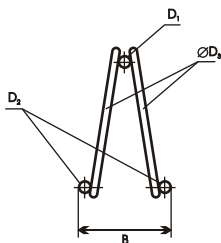
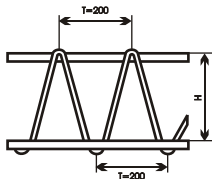
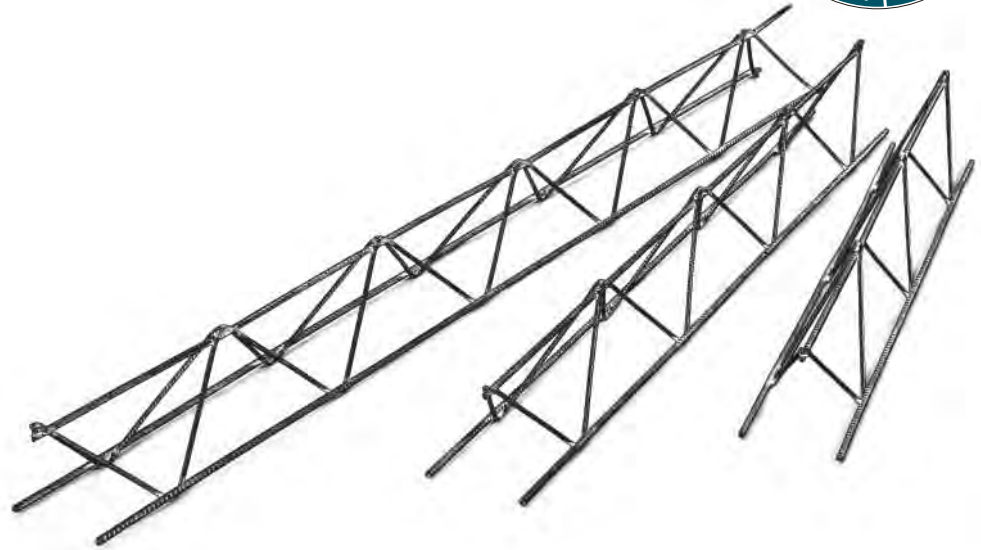
STEEL GRADE:

Top and bottom reinforcing wires:
reinforcing steel grade BSt500M - DIN 488
Welded-Longitudinal wires: steel St 37-2

LENGTH - DIMENSIONS:

Length: from 6 to 12m
Welding spacing: 200mm

LATTICE GIRDERS



The Lattice Girders are produced with 2 longitudinal wires in the bottom flange and 1 wire on the top, welded together in regular distances using a smaller diameter secondary wire.

The top and bottom reinforcing wires are produced with wire rod SAE 1010 that after cold rolling obtains the mechanical characteristics of the required reinforcing steel (BSt500M according to DIN488).

The Lattice Girders are used mainly as reinforcement of prefabricated slabs and beams, where concreting is performed in two stages, offering the advantage of avoiding scaffolding and formwork needed in traditional construction.

Therefore Lattice Girders are best suited when slab reinforcement is generally light, while at the same time fast and no-formwork construction is needed.

TECHNICAL CHARACTERISTICS LATTICE GIRDERS

HEIGHT H (mm)	WIDTH B (mm)	WELDING SPACING T (mm)	DIAMETERS LONGITUDINAL WIRES		WELDED WIRES D3 (mm)
			BOTTOM D2 (mm)	TOP D1 (mm)	
70-220	70-100	200	Ø4 to Ø10	Ø5 to Ø10	Ø4.2 to Ø6

SALES NETWORK

www.sidenor.gr • www.stomana.bg

GREECE-SIDENOR SA

33, Amaroussiou-Halandriou street, GR-15125 Maroussi, Athens, Greece
Tel.: +30 210 6787.111
Fax: +30 210 6787.740

GREECE-SIDENOR SA

12th klm, National Road Thessaloniki-Veria, GR-57008, Ionia, Thessaloniki, Greece
Tel: +30 2310 790.118
Fax: +30 2310 790.144

BULGARIA-STOMANA SA

1, Vladaisko Vastanie str. BG-2304 Pernik, Bulgaria
Tel.: +35 976 681.013
Fax: +35 976 681.951

FYROM-DOJHRAN STEEL Ltd

S. Nikolic, Posta Nov Dojran, FYROM
Tel.: +389 34 219.228
Fax: +389 34 219.263