



TECHNICAL SPECIFICATIONS

TYPE:
Hot-Rolled bars of circular cross-section (Rounds)

STEEL GRADE:
- S235JR according to ELOT-EN 10025 (St 37-2 according to DIN 17100)
- S275JR according to ELOT-EN 10025 (St 44-2 according to DIN 17100)

FORM - DIAMETER:
Straight bars with diameter from 10 to 120mm

LENGTH - TOLERANCE:
Bar length 6m with tolerance -0 / +100mm

PACKING - WEIGHT:
Bundles weighing approximately 2,500kg

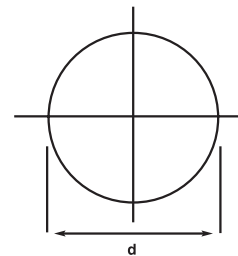
DIAMETERS - WEIGHT - TOLERANCES:
According to EN 10058 (DIN 1017)

ROUNDS

Hot-Rolled bars of circular cross-section



Round bars are manufactured at SIDENOR's factory in Thessaloniki, at a length of 6 metres and with diameters from Ø10mm to Ø22mm and at STOMANA'S factory in Bulgaria, with diameters from Ø25mm to Ø120mm. Rounds are intended for traditional railing makers, screw makers, mechanical equipment manufacturers, etc.



SALES OFFICES

www.sidenor.gr

CENTRAL OFFICES

SIDENOR SA
33, Amarooussiou-Halandriou str.
GR-15125, Maroussi, Athens, Greece
Tel.: (+30) 210-6787854,
(+30) 210-6787700
Fax: (+30) 210-6787740

THESSALONIKI PLANT

SIDENOR SA
12th klm National Road
Thessaloniki-Veria GR-57008,
Ionia, Thessaloniki, Greece
Tel.: (+30) 2310-790133
Fax: (+30) 2310-790144



STEEL CHEMICAL COMPOSITION & MECHANICAL PROPERTIES

STEEL GRADE	CHEMICAL COMPOSITION			MECHANICAL PROPERTIES		
	C (%) max	P (%) max	S (%) max	YIELD STRENGTH (N/mm ²) min	TENSILE STRENGTH (N/mm ²)	ELONGATION 5d ₀ , (%) min
S235JR (St 37-2)	0.170	0.040	0.040	235	360 - 510	26
S275JR (St 44-2)	0.210	0.040	0.040	275	410 - 560	23

DIAMETERS, WEIGHTS & TOLERANCES OF ROUNDS

DIAMETER* d (mm)	PERMISSIBLE DIAMETER DEVIATION (mm)	NOMINAL CROSS-SECTION (cm ²)	NOMINAL WEIGHT (kg/m)	NOMINAL SURFACE AREA (cm ² /m)	PERMISSIBLE OUT-OF-ROUNDNESS (mm)
10	± 0.4	0.785	0.617	314	0.64
12	± 0.4	1.13	0.888	377	0.64
14	± 0.4	1.54	1.21	440	0.64
16	± 0.4	2.01	1.58	503	0.80
18	± 0.5	2.54	2.00	565	0.80
20	± 0.5	3.14	2.47	628	0.80
22	± 0.5	3.8	2.98	691	0.80
25	± 0.5	4.91	3.85	785	0.80
27	± 0.6	5.73	4.50	848	0.96
28	± 0.6	6.16	4.83	880	0.96
30	± 0.6	7.07	5.55	942	0.96
32	± 0.6	8.04	6.30	1,010	0.96
35	± 0.6	9.62	7.55	1,100	0.96
40	± 0.8	12.6	9.86	1,260	1.28
42	± 0.8	13.85	10.90	1,320	1.28
45	± 0.8	15.9	12.50	1,410	1.28
50	± 0.8	19.6	15.40	1,570	1.28
55	± 1.0	23.8	18.70	1,730	1.60
60	± 1.0	28.3	22.20	1,880	1.60
65	± 1.0	33.2	26.00	2,040	1.60
70	± 1.0	38.5	30.20	2,200	1.60
75	± 1.0	44.2	34.70	2,360	1.60
80	± 1.0	50.3	39.50	2,510	1.60
85	± 1.3	56.7	44.50	2,670	2.08
90	± 1.3	63.6	49.90	2,830	2.08
95	± 1.3	70.9	55.60	2,980	2.08
100	± 1.3	78.5	61.70	3,140	2.08
110	± 1.5	95	74.60	3,460	2.40
120	± 1.5	113	88.80	3,770	2.40

* Special dimensions can be available upon request