

WIRE ROD

SAE 1006 - SAE 1008 - SAE 1010 - ELECTRODES USD7 - RSt 37.2

WIRE ROD



TECHNICAL SPECIFICATIONS



TYPE:

Hot-Rolled Wire Rod



STEEL GRADE:

- 1) SAE 1006 according to ASTM A510M
- 2) SAE 1008 according to ASTM A510M
- 3) SAE 1010 according to ASTM A510M
- 4) ELECTRODES (USD 7) according to DIN 17145
- 5) RSt 37-2 according to DIN 17100



FORM - DIAMETER:

Coils diameters form $\varnothing 5.5$ to $\varnothing 16$ mm



COIL WEIGHT:

From 1,250 to 1,450kg



DIMENSION - WEIGHTS - TOLERANCES:

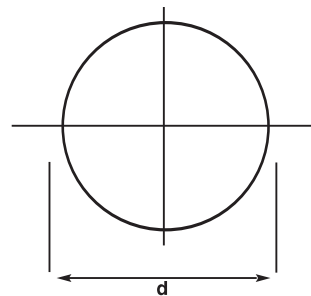
According to DIN 59110



SIDENOR's Wire Rod is produced at the Thessaloniki plant, Greece. The produced grades are:

- SAE 1006, 1008, 1010 according to ASTM A510M
- ELECTRODE QUALITY (USD 7) according to DIN 17145
- RSt 37-2 according to DIN 17100.

SIDENOR's Wire Rod is suitable for a vast range of cold-drawing and covers all the needs of the low-carbon wire products industry.



SALES NETWORK

www.sidenor.gr • www.stomana.bg

GREECE

SIDENOR SA

33, Amarooussiou-Halandriou street, GR-15125 Maroussi, Athens, Greece
Tel.: (+30) 210-6787111
Fax: (+30) 210-6787740

GREECE

SIDENOR SA

12th klm, National Road Thessaloniki-Veria, GR-57008, Ionia, Thessaloniki, Greece
Tel: (+30) 2310-790118
Fax: (+30) 2310-790144

BULGARIA

STOMANA SA

1, Vladaisko Vastanie str. BG-2304 Pernik, Bulgaria
Tel.: (+359) 76-681023
Fax: (+359) 76-681951

FYROM

DOJLAN STEEL Ltd

S. Nikolic, Posta Nov Dojran, FYROM
Tel.: (+389) 34-219228
Fax: (+389) 34-219263



CHEMICAL COMPOSITION OF WIRE ROD STEEL GRADES

STEEL GRADE	C (%) max	Mn (%)	S (%) max	P (%) max	Si (%) max	Cr (%) max	Ni (%) max	Cu (%) max	TYPICAL USES
SAE 1006	0.08	0.30-0.40	0.025	0.020	0.08	0.10	0.10	0.15	Black & galvanized wires, small nails
SAE 1008	0.09	0.30-0.50	0.030	0.020	0.10	0.15	0.15	0.25	Black & galvanized wires, nails, galvanized fencing mesh
SAE 1010	0.10	0.40-0.60	0.040	0.025	0.15	0.20	0.20	0.35	Concrete reinforcing wire mesh, nails, galvanized fencing mesh
ELECTRODES	0.09	0.40-0.60	0.025	0.020	0.05	0.10	0.10	0.15	Coated welding electrodes (according to DIN 17145 / USD7)
RSt 37-2	0.12	0.40-0.65	0.040	0.025	0.20	0.20	0.20	0.40	Concrete reinforcing wire mesh

DIAMETERS, WEIGHTS & TOLERANCE OF WIRE ROD

DIAMETER d (mm)	PERMISSIBLE DEVIATION (mm)	NOMINAL CROSS-SECTION (cm ²)	NOMINAL WEIGHT (kg/m)	PERMISSIBLE OUT-OF-ROUNDNESS (mm)
5.5	0.3	0.238	0.187	0.48
6.0		0.283	0.222	
6.5		0.332	0.260	
7.0	0.4	0.385	0.302	0.64
8.0		0.503	0.395	
9.0		0.636	0.499	
10.0		0.785	0.617	
11.0		0.950	0.746	
12.0		1.130	0.888	
14.0	0.5	1.540	1.210	0.80
16.0		2.010	1.580	